

JiNTHE'S CREATIONS

Commission guide



Here you will find a clear overview of my prices, offerings, and an explanation of my commission process. For questions, please check the FAQ on my website first, or feel free to contact me.

Please read everything carefully to avoid any surprises!

First of all, thank you so much for considering me to create a commission for you. It truly means the world to me as an artist to know that you trust me to bring something special to life for you. I'm committed to delivering a high-quality illustration that meets your vision, and together, I'm confident we'll create something beautiful!

When you request a commission, you can choose from several options in terms of style and format/size. If you're looking for a more budget-friendly option, I recommend my commission packages. These packages include pre-made concepts that you can customize to your liking, giving you a personalized piece at a more affordable price point. You can find these packages on my site under 'I want a commission' > 'commission packages'.

You can read all about the process and my workflow in this document that I put together for you with much love and care. If you still have any question you can always reach out to me and I'd be happy to help you out.

This guide contains prices and clear examples of what I offer. You also have the option to buy custom merchandise of your commissioned artwork which you can read all about. If you're interested in customized merchandise but don't want to purchase a commission you can always pick one of my drawings from the shop or gallery and make it into a phone case, keychain or sticker. Please contact me if you're interested in that.

Thank you so much for reading

WWW.JINTHESCREATIONS.COM



How it works

I offer commissions based on size (line art) and coloring style. I chose to price my commissions this way to keep the pricing as fair as possible. With the different options for coloring techniques, you have the opportunity to make a full-body drawing more affordable. This makes the pricing fairer in relation to time and technique. *You will find clear examples of all the options on the next page.

You can select from the following illustration size types:

- **Sketch:** rough sketch
- **Headshot:** From head to shoulders
- **Full-body:** The complete figure

Each size has a base price, and you can personalize your artwork further by choosing one of the following coloring styles:

- **Watercolor**
- **Cel Shading**
- **(Semi) Realism**

Each style gives your artwork a completely different look, and below, you'll find examples and explanations to help you choose the perfect match for your vision.

All communication regarding your commission (process) is done through email, text or Instagram DM (@jyccreationss)

PRICES ARE EXCL. BTW

Background Options

- **Simple Background:** A single color or gradient with small details (e.g., sparkles or light effects). This is **always free**.
- **Detailed Background:** For more intricate backgrounds, such as detailed scenery or complex designs, there's an additional. (price may vary based on complexity)

Additional Characters

You also have the option to include more characters in your illustration:

- **Small Character** (e.g., pets or small animals)
- **Large Character.**

Adding characters allows for even more storytelling in your illustration, or the opportunity to add in a loved one. Let me know beforehand if you want to add multiple character in terms of composition and time.

(Example: Headshot €60 + Cel Shading €80 + Simple background (FREE)
= €140 total (excl. 21% btw)

A Few Things to Keep in Mind (Important)

- **What I don't draw:**

I don't create machines, complex buildings, robots, or NSFW content. However, if you have a request that's a little outside my usual scope (e.g., cars, weapons, horror themes, buildings, etc.), feel free to reach out, and we can discuss the possibilities! While I'm open to exploring, if my style doesn't suit what you're looking for, I encourage you to find an artist who specializes in that subject to ensure the best results.

- **Personal vs. Commercial Use:**

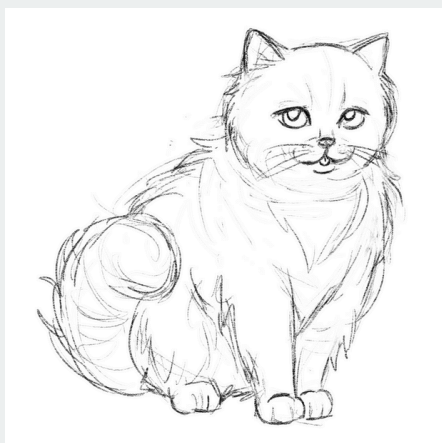
Commissions are intended for personal use only unless we've agreed otherwise. If you'd like to use your illustration for commercial purposes (such as logos, merchandise, or promotional material), please contact me. A commercial fee of at least **100% of the original price** will apply. It's important to note that commissions requested for personal use cannot later be used commercially. Additionally, it is not allowed to (re)sell my work or use it as NFTs (non-fungible tokens), whether for personal or commercial purposes.

- **Sharing Your Artwork:**

Feel free to use your commissioned illustration however you'd like for personal purposes. I'd love to see how you share it! Whether it's on social media or elsewhere, please tag me (@jinthescrations or @jyccreations on Instagram) so I can see and repost it—it always makes my day.

If you have any questions or special requests, don't hesitate to reach out. I'm here to guide you every step of the way, and I can't wait to work together to create something truly special just for you!

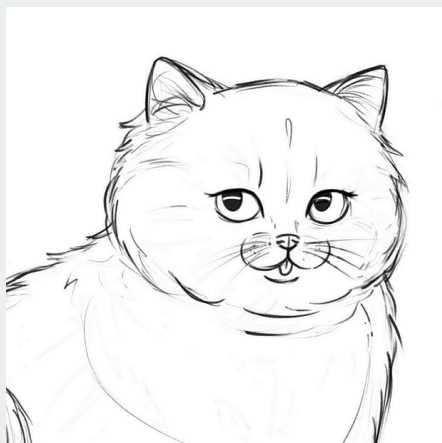
ILLUSTRATION BASE



Sketch

A rough sketch of your concept. Simple and affordable, perfect for a quick visual. **IMPORTANT:** You don't have to pay (extra) for the sketch if you want a headshot or full body drawing!

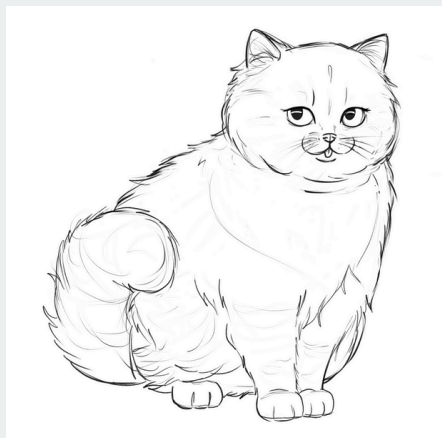
€50



Headshot

Clean and detailed line art of your character, focusing on the head and shoulders. Ideal for portrait drawings.

€70



Full body

A full-body illustration with clean lines. Large animals and any other large scale illustration fall under this category too. If you have any questions, feel free to message me—we'll discuss the details together!

€100

COLORING OPTIONS



Watercolor

A soft and dreamy style created with digital watercolor-brushes. This technique has a playful, traditional feel with light, delicate colors. It's also the most budget-friendly coloring option. Perfect for art focused on children.

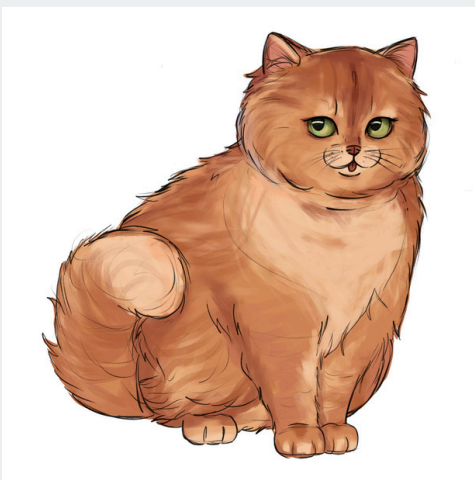
€90



Cel shading

A bold and clean coloring style that's perfect for fans of anime or stylized illustrations. This technique uses defined lines and shadows, giving your artwork a fun, cartoon-like appearance. Perfect for anime drawings.

€100



(Semi)realism

A detailed and lifelike style with carefully blended colors and attention to lighting and shading. This style gives your illustration depth and brings it to life, making it ideal for portraits or those who love a more realistic finish. Perfect for fur and portraits.

€200

(Examples on next pages)



EXTRA CHARACTERS + BACKGROUND



Extra small character

Add a small pet, friend or buddy to your drawing. Perfect if you want to personalize your artwork even more!

€70



Large or same size character

Make your drawing even more special by adding another character. Coloring included

€200



Simple background

A single color or gradient background with small details (e.g., sparkles or light effects). This is **always free**.

FREE



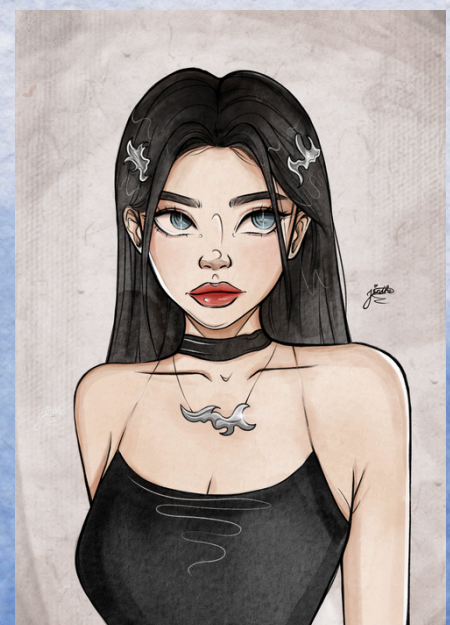
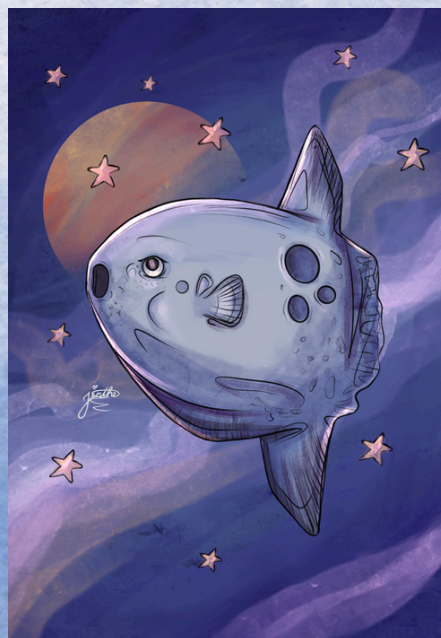
Detailed background

Add another layer of depth to your drawing by putting your character in a fitting scenery. For more intricate backgrounds, such as detailed scenery or complex designs, a small fee will apply.

€50 -200 (may vary based on complexity)

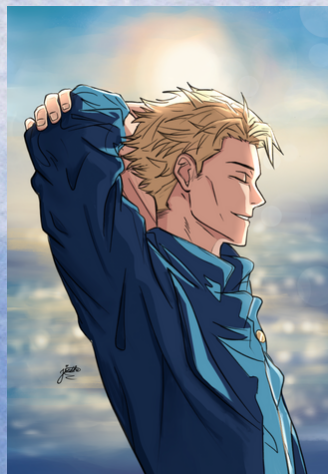
EXAMPLES COLORING

Watercolor



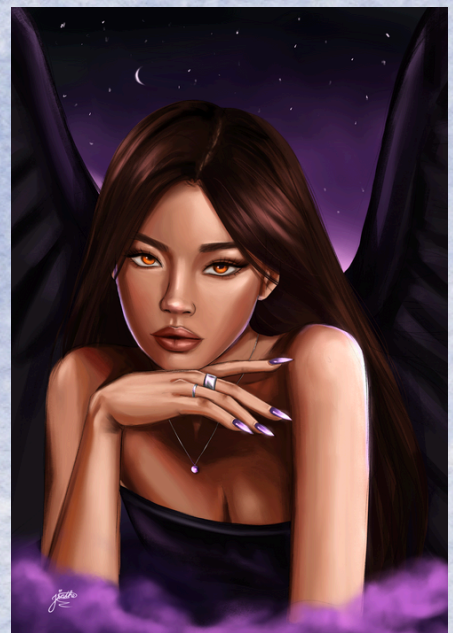
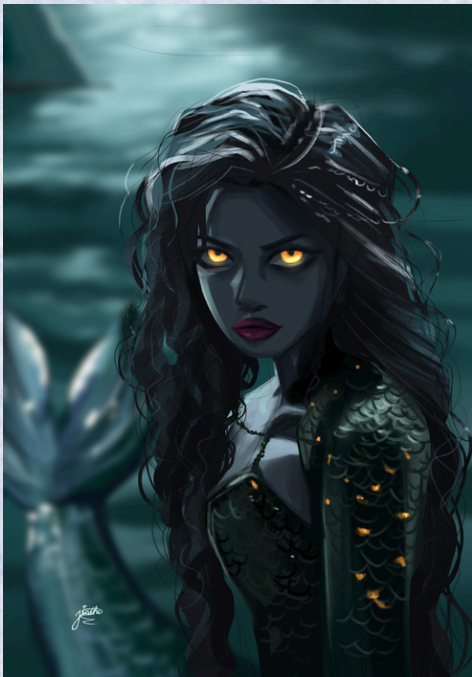
EXAMPLES COLORING

Cel shading



EXAMPLES COLORING

(Semi)realism



Optional merchandise

Bring your artwork to life

For something truly personal and to give yourself or someone else as a gift. Let your artwork shine as a phone case, keychain, or decorate your house with a printed version of your drawing.

I will have all the products made for you and send them to you with care. If you don't want a personalized artwork made but are interested in an item featuring one of my drawings, it's possible to have one of my existing drawings made into an item of your choice. Please contact me for this. Prices will vary per product, so feel free to reach out to me for more information.

An indication of the prices per product (shipping not included):

Phone case €30

Sticker € 15

Keychain € 25

Print € 20

Keep in mind that these are roundabout prices and may vary based on extra customization per product and shipping.

*An extra 10% production fee is added to the total costs.

You can always choose to print your artwork out yourself and pick out a production company nearby or that you prefer.

OPTIONAL MERCHANDISE



PHONE CASE



KEYCHAIN



STICKER



PRINT

Rights

Personal Usage:

If you purchase a commission from me for personal use I still own all of the rights to the artwork. I can share the artwork however I like but I won't sell it as a print or any other way. If you're not comfortable with me sharing your commissioned artwork we can discuss the details together.

You're allowed to use the artwork however you like for personal use ONLY. This means any form of commercial use is strictly forbidden. The artwork may not be used as promotion material or sold as prints and other merchandise.

If you do want to use the artwork for commercial use please contact me beforehand or read the available information in my FAQ on my site.

For more questions contact me.

info@jinthescrations.com

06 24434375

@jyccreationss (Instagram)